

TENDER No.: 20 / 2016 - 2017 /Consuma./IGIMS/ Store.

INDIRA GANDHI INSTITUTE OF MEDICAL SCIENCES, SHEIKHPURA, PATNA - 14.

INDEX

Sr. No.	Description	Page No.
01.	INSTRUCTION TO BIDDER	5
02.	CONDITION OF THE CONTRACT	6 to9
03.	SCHEDULE OF THE REQUIREMENT AND OTHER DETAILS.	10 to29

IMPORTANT DATES

Last date for submission of Bidding Document	23.5.2016 upto 4.00 P.M.by Registered/Speed post/ Courier only
Date of opening of Bidding Document(Technical bids only)	24/5/.2016 at 3.30PMin Conference Hall of I.G.I.M.S. – Patna.

CHAPTER - 1

INSTRUCTION TO BIDDER

TENDER FORMS & DOCUMENTS

01.	Date & time of issue of Tender Documents is:	Sl. No.: Cost of Tender Document: Rs. 1000/-
02.	Last Date & time for receipt of Tender is 23.5.2026 at 4.30PM P.M.	Issued to: M/s Group No.:
03.	Date & Time of opening of Tender is 24.5.2016 at 3.30 P.M.	Issued by:
04.	Name & Address of tenderer(s):	Signature.
05.	Registration No of the following: - <ul style="list-style-type: none"> a. BST & CST No/VAT No. (Attached certificate) b. Sale Tax clearance certificate. Up to date c. DGS & D Registration Certificate, if rate quoted on DGS D Rate contract. Earnest Money:- Rs.10,000/(Rs. Ten Thousand for each Group) in favour of Director, I.G.I.M.S., Patna payable at Patna in way of Demand Draft. No.....dated.....and Amount.....	
06.	Period of validity of quoted price:- Mentioned in T&C	
07.	<u>Tenderer will not be allowed to mention any kinds of discount in quotation/terms and conditions. He will quote the rate only as per column in Sl. No.- 15 given below only. Other wise his tender will stand cancelled and no further correspondence will be entertained in this regard.</u>	
08.	Clearly mention the Guarantee period & after sale services to be provided, if applicable.	
09.	General terms & conditions & tender document are mentioned in Chapter 2.	
10.	This Tender document is <u>Non-transferable</u> .	
11.	Please mention “ Name of Group” at the left top corner of envelope.	
12.	Separate Tender Document is required for each group..	
13.	The quotation for items in the Tender Notice should be in the following format. Otherwise tender shall not be considered and rejected outright.	
14.	Note: <i>Overwriting/Fluinding/Cutting in price will not be allowed.</i> <i>Rates/Prices must be mentioned both in figure and words.</i>	

Name of the Item	Packing size	Offer price per Unit specification.	per with	CST	Surcharge	BST	VAT	TOT	Net Unit Price	Is it DGS & D rate/Approved Hospital/GeneralMarket rate
1	2	3	4	5	6	7	8	9	10	

Signature of tenderer with date

1. Following certificates are required with the **Technical Bid**:

Sl. No	Require Certificate	Attached at Page No.:..... of Technical Bid
1	Name and full address of the Bidder with Office telephone Number.	
2	Status of the Bidder whether manufacturer or authorized dealer/ agent/stockiest etc.	
3	Authorization letter of company (if authorized agency) in favour of bidder valid for not less than three prospective years.	
4	VAT Registration No. of bidder, if applicable.	
5	Sales Tax Clearance Certificate	
6	Pan Card of the bidder	
7	Income Tax return of bidder for the last three successive years up to financial year 2015-16.	
8	An affidavit from bidder that the company/firm has not been blacklisted /De- registered/ De- Barred by any govt. Institutions / organization	
9	An affidavit from bidder that the quoted rate in this financial bid is not more than the rate quoted in any other government, organization/Institution by them.	
10	An affidavit that Quoted rate is not higher than MRP.	
11	All documents must be attested by the bidder with signature, date seal.	
12	Technical specification of the items quoted in the light of the specification given in the bidding document (submit a check list).	
13	List of Institutions/Hospitals where supply has been made in the last three years.	
14	Sample of the Items (Must for the clothes of all types, Cotton, Gauge, Disposable Syringe, etc where ever applicable as mentioned in the document)	
15	Total turnover year wise in the preceding last three years. Manufacturers/Supplier having large turnover shall be preferred. (Attach audited Balance sheet & P/L A/C).	

PRICE BID:

- (1) Price of all the items quoted should be mentioned separately for each item. The price should be per unit basis.
- (ii) Standardization certificate for the items used shall have to be submitted, if required.
- (iii) All taxes applicable must be quoted wherever applicable. The exact amount of the tax at the prevailing should be clearly quoted. Simply **writing tax as applicable** shall not be sufficient and accepted & bid will be rejected.

CHAPTER - 2

CONDITIONS OF THE CONTRACT

CONDITIONS OF THE CONTRACT

01. **Destination of Delivery**:- Central Store Section, I.G.I.M.S., Sheikhpura , Patna
02. **Acknowledgement and Discrepancies** :
On receipt of the supply orders any discrepancies should be pointed out within 10 days of the issue of the order. In case, no intimation to the contrary is received from the firm within 10 days, it will be assumed that order has been accepted in full even though it may have been placed after the lapse of the validity period of the quotation.
03. **Prices**: - As mention in supply orders.
04. **Taxes**:-As mention
05. **Payment**:- After receipt of goods and submission of satisfactory Inspection Report issued by concerned authorities.
06. **Price Variation Clause**: The institute shall accept the price rates as mentioned in the quotation only. The claim for price increase over the quoted price shall not be accepted by the institute within the validity period of the quotation. However, where the firm has quoted on price list basis the institute may accept the increased price applicable at the time of actual supply on production of valid and current price list.
07. **Validity of Price**;- one year from the date of opening of price bid. Or it will be extendable as per requirement.
08. **Delivery Period**: -30 days from the date of issuance of supply order.
09. **Penalty Clause**:- If the firm supplies after expiry of 30 days a penalty of 2% of the total ordered value will be imposed/charged. If the firms fail to supply the ordered goods even after 30 days, the following action shall be taken against them.
 - a. Cancellation of the supply order.
 - b. Forfeiture of EMD.
 - c. Black listing of firm for any future participation.
 - d. Legal action, if necessary. Legal jurisdiction court of Judicature at Patna
10. **Supply**: - Normally Stores pertaining to the Supply Order should be dispatched in one lot. Part supply may be allowed upon written request by the supplier and permission granted by the officials authorized by the Institute.
11. **Delivery Extension**: Under special circumstances if valid reason for extension to the satisfaction of the Institute is provided, the Institute may consider giving further extension **of time without penalty.**
12. **Payment**: - Payment will normally be made when the full supplies is made against a supply order, except when part supply has been allowed in supply order or when supplier has been asked to supply in instalment. Or in any other special circumstance by order of competent authority. In such a situation payment may be released upon part supply after completing established procedures
13. **Replacement of defective / expired supplies**:- Shall be the responsibility of the firm on their cost, who has executed the supply.

14. **Expiry date of item supplied:-** No supply of items having expiry date less than one year on the date of supply shall be accepted by the store.
15. **Discrepancy or Omission:**
The payments are made strictly on the basis of the supply order and firms are advised not to deviate from supply orders instruction in all respect. In the event of there being any discrepancy, the matter should first be referred to the institute for necessary amendment in the supply order before making actual supply and submission of the bill.
16. **Challan:**
The suppliers should submit the challan in triplicate alongwith the supplies to the Central Store, IGIMS, Patna-14.
17. The bills should be submitted to the office of the Officer under whose signature supply order has been issued .
18. **Excise Surcharge:**
Following certificate should also be endorsed on each copy of the bill at the time of charging the Excise Duty, if admissible.
- “It is certified that the Excise Duty included in the bill is in accordance with the Excise Duty Rules and that the stores on which the Excise Duty has been charged are not exempted from the Excise Duty under the Rules framed by the Government of India for this purpose and the Excise Duty so charged /collected has been remitted accordingly to provision of the relevant rules.”**
19. The Institute is not covered under Form ‘B’ and as such Sales Tax as stipulated may be billed at the rates applicable at the time of supply.
20. **Items available in different packing, size/quantities:**
For the items available in different packing sizes/quantities the gross rate as well as unit price (In terms of relevant net quantity) should be mentioned for each packing size/quantity.
21. **Items with different net and gross weight:**
For items with different net weight and gross weight, for each packing size, both net as well as gross weight must be mentioned alongwith corresponding rates.
22. **Items with different specification for same item:**
For items with different specifications, if mentioned in tender paper separate rate with details specification must be mentioned.
23. **Stamping / Numbering of Items:**
For items having longer life e.g. furnitures, fans, almirah and certain linen, manufacturer / supplier may be required to put a number s / stamping with paint or any other suitable materials at the discretion of the institute. Tenders should mention the separate rates for this work.
24. **Items with certain specified Half – Life:**
For items with specified half-life e.g. radioisotopes half-life of the items quoted must be mentioned. Unless otherwise, the quantity in such cases accepted for payment will be the quantity received at I.G.I.M.S. store and not at dispatched.

25 **Warranty / Guarantee on the items to be supplied:**

Wherever applicable, supplier is required to mention warrantee/guarantee available on specified items (with duration of warrantee/guarantee applicable). manufacturer/authorised dealer/supplier offering warrantee/guarantee on item supplied will be given due weight age. in case where warranty/guarantee is mentioned on the packing material/item itself /catalogue of the manufacturer , it will be applicable and it will be mandatory for the supplier to extend the same to the institute.

26 **D. G. S. & d. Rate Contract:**

Manufacturers/dealer/supplier having D.G.S. & D. Rate Contract should attach necessary certificate with validity alongwith rate and specification for relevant items.

27. Supplier is required to give under taking to the effect that they have not supplied the Items quoted to any Govt./ Semi Govt. institution / organization at prices lower than the price being quoted. Further, in case of price going down in future, it will pass on the benefit to IGIMS, Patna.

Tendered must submit a certificate that the quoted price is not higher than the MRP or market price of the same make of the quoted items.

28. The Institute if so desire may ask any tendered to furnish their turn- over of the quoted items for Previous two to three years with a list of users of those items

IMPORTANT

The procedures for rendering of bills are prescribed in clauses 7,8 and 9 above. It is essential that the bills should be in accordance with these clauses: -

1. The bills should be prepared in triplicate.
2. It should be accompanied by the Inspection Note to be obtained from the department concerned of the Institute.
3. The Bills should be pre-receipted and affixed with Revenue stamps, where necessary.
4. In bills B.S.T. registration number must be mentioned on each copy of the bill.
5. The bills should be supported by a certificate for Excise Duty as stated in the above clause.

29. **Postage and Freight:**

Where payable in terms of supply order and is claimed in the bills, the original receipt granted by the post office and/ or the Railways should be attached with the bill.

- 30 **Replacement:** Replacement of defective supplies shall be the responsibility of supplier at their oncost.

31. Special Clause may be added if necessary in the Supply Order.

Sd/-
Director
IGIMS, Patna.

CHAPTER - 3

SCHEDULE OF THE REQUIREMENTS

AND

OTHER DETAILS.

Group-A -Urology Dept. (Instruments)

Sr. No	Name	Specifications	Quantity
1	Sponge holding forceps	Serrated jaws straight Length 16 inch Length 9 inch	4
2	Sponge holding forceps	Serrated jaws straight Length 9 inch	4
3	Allis tissue holding forceps	5x6 teeth 16 cm and 24 cm	6 each
4	Curved and straight hemostatic forceps with serrated jaws Crile type	Length 14	8 each
5	Kelly haemostat forceps Straight and curved jaw	Half serrated jaws Length 15 cm	8 each
6	Jacobson type hemosat forceps Curved	Length 10 cm and 19 cm	3 each
7	Jacobson type hemosat forceps Fully Curved	Length 19 cm	2
8	Jacobson type hemosat forceps straight	Length 10 and 20 cm	2 each
9	Spencer wells type hemastat forceps straight	Length 15 and 20 cm	4 each
10	Spencer wells type hemostat forceps curved	Length 13, 15 and 24 cm	4 each
11	mosquito forceps straight	Length 12 and 15 cm	8 each
12	mosquito forceps curved	Length 12 and 15 cm	8 each
13	Babcocks forceps	Length 15 and 24 cm	4 each
14	Rt angled dissecting forceps Mixer type	Length 18 cm	4

15	Rt angled dissecting forceps Adson baby type	Length 18 cm and 24 cm	4 each
16	Roberts type dissecting forceps	Length 25 cm	6
17	Kochers clamp	LENGTH 20	6
18	Needle holder collier type TC	Length 13 cm	2
19	Needle holder adson type TC	Length 18cm	2
20	Needle holdermetzenbaum type TC	Length 19 cm	2
21	Needle holder mayo hagertypeTC	Length 16 and 20 cm	2 each
22	Needle holder Heaney typeTC	Length 20 cm	2
23	Needle holder jameson type TC	Length 23cm	2
24	Needle holder massontypeTC	Length 27 cm	2
25	Needle holder wangensteen type TC	Length 27 cm	2
26	Needle holder curved strattetypeTC	Length 27 cm	2
27	Needle holder shaft with rt angle curve Johnson type TC	Length 27 cm	2
28	Needle holder tc gold Webster type	Length 13 cm	2
29	Needle holder tc gold kilner	Length 14 cm	2
30	Needle holder tc gold crilewod type	Length 15 cm and 21 cm	2each
31	Needle holder tc gold mayo hager type	Length 16 and 24 cm	2 each
32	Needle holder tc gold de bakey	Length 18 and 23 cm	2 each
33	Needle holder tc gold masson type	Length 26 cm	2
34	Needle holder tc gold microvascular	Length 14 ,20 and 26 cm	2 each
35	Needle holder tc gold martini type	Length 14 and 20 cm 2 each	2 each
36	Lengenback retractors	Length 22 cm	4
37	Lahey retractors	Length 20 cm	4
38	Kochner retractors	Length 23 cm blade width 2 to 4 cm	4
39	Kochnerlangenbeck	Length 22 cm	4
40	Kochner retractors	Length 23 cm	4
41	Doyens retractor	Length 24 cm	4
42	Harrington retractor	Length 33 cm with blade width 4 and 6 cm	4 each
43	Polloson retractor	Length 30 cm	2
44	Sauerbruch type retractor	Length 22 cm	2
45	Daever retractors	Length 18,25 and 35 cm with blade width 2,5 and 8 cm	
46	Mikulicz retractor	Length 25 cm	

47	Roux retractors		2 sets
48	Parkar retractors		2 set
49	Parkarmott retractors		2 set
50	Farabeuf retractors		2 set
51	Us army retracors		2 set
52	Desmarres lid retractors		2 set
53	Standard scissor TC gold Mayo type	Length 10cm.14 cm and 24 cm with staight and curved shaft	4each
54	Standard scissor supercut Mayo stille type	Length 14 cm and 24 cm withstraight and curved shaft	4 each
55	Standard scissors sims type T C gold and supercut	20 and 23 cm	4 each
56	Scissorssimsiebold type	Length24 cm	2
57	Scissor werthim type	Length 10 and 20 cm	2 each
58	Metzenabaum straight and curved TC gold and supercut	Length 12 cm 18 cm 23 cm and 30 cm	3 each
59	Lexer scissor TC gold and supercut	Length 16 cm	3
60	De bakey scissor Tc gold	Length 17 cm	2
61	Lexer baby super cut	Length 10 cm	2
62	Metzenbaumfinotc gold	Length 13, 18 and 24 cm	2 each
63	Reynolt scissors standard and super cut	Length 15 and 18 cm	2 each
64	Potts scissor TC	Length 19 cm and 10 cm	2 each
65	Iris scissors tc gold	Length 10 cm	2
66	Stevens scissors tc gold	Length 11 cm	2
67	Dissecting forceps standard type toothed and plain	Length 10cm,18 cm and 24 cm	5 each
68	Mini adson type forceps TC	Length 10 cm and 15 cm	4 each
69	Mcindoe type dissecting forceps TC	Length 15 cm	4
70	Waugh type dissecting forceps	Length 20 cm	4
71	Semken type dissecting forceps	Length 15 cm	2
72	Taylor type dissecting forceps tc	Length 17 cm	2
73	Dissecting forceps with fine tip tc	Length 10 and 15 cm	3 each
74	Atraumatic forceps potts smith tc	Length 18 and 30 cm	4 each
75	Atraumatic forceps Gerald type straight TC	Length 15 and 20 cm	4 each

76	Atraumatic forceps Gerald type curved TC	Length 20 cm	2
77	BONNEY toothed forceps TC	L-17 CM	2
78	GERALD toothed forceps TC	L-17 cm	2
79	Giles toothed forceps TC	L-15 CM	2
80	CUSHING dissectin forceps TC Straight	l-17 cm	2
81	CUSHING dissectin forceps TC curved	l-17 cm	3
82	De bakey dissecting forceps TC straight with tip 2mm,3mm and 4 mm	Length 15 and 20 cm	3 each
83	Jabomaatraumatic dissecting forceps Straight	L-18 CM	3
84	Jabomaatraumatic dissecting forceps Curvedo	L-18 CM	3
85	OEHLER toothed forceps TC	L-14 and 24 cm	2
86	Wangensteen forceps	L-23 cm	2
87	Jewellers forceps	L-12 CM	2
88	MicoRing tip vascular forceps	L-15CM	4
89	Atraumatic forceps with curved tip	L-15 CM	2
90	Debakey end arterectomy scissors	L-18 cm	2
91	Heparin cannula 3 mm tip	L-4.5 CM	3
92	HEPARIN CANNULA 1.5 mm tip	L-4.5 CM	3
93	Heparin cannula 5 mm	L-4.5 CM	3
94	DOYENS TOWEL CLIP		30
95	KIDNEY TRAY		10
96	Yankauer tube curved	10 mm dia	4
97	Debakeyadson coronary suction type	5 mm dia	2
98	Stadard micro suction		2
99	SS Basin		4
100	Scalpel handle no 3	12 cm	4
101	Scalpel handle no 4	12 cm	4
102	Scalpel handle no 7	12 and 20 cm	4
103	Scalpel handle no 7	26 cm	4
104	Hammer and chisel	18 cm	2 set
105	Bull dog de bakey straight	5,6 ,8 ,9,12 cm	3 each
106	Bull dog de bakey curve	5 6,8.9. 12 cm	3 each
107	Bull dog de bakeyhess type	L-3 and 4 cm	3 each
108	BuBll dog de bakeysatinski	L 7 AND 10 CM	2 EACH
109	Bull dog santuli type	L 7 CM	
110	De bakeyrankinatraumatic hemostatic forceps straight and curved	Lenth 16 cm	2 each
111	Aortic clamp type ochsner type	L 22 CM	2
112	Aortic clamp type Diethrich type	L 22 CM	2
113	DARDIK TYPE CLAMP STRAIGHT AND CURVED	L 15 CM	2
114	Dale type vascular clamp with medium and large spoon size	L 17 CM	2
115	DE bakey aortic clamp curved and straight	L 30 CM	2
116	DBAKY TNGENTAL CLMP 2.48MM-WIDE 265MM		2
117	DE'BAKEY TANGENTAL CLMP 54/99/270MM		2

	DBAKY TNGENTIAL CLMP 4.58MM-WIDE270MM		
	DE'BAKEY TANGENTIAL CLMP 5 75MM-W280MM		
120	COOLEY VASCULAR CLAMP	L 16 CM	2
121	DEBRA VASCULAR CLAMP	L 17 CM	2
122	Wylie type vascular clamp	L 22 CM	2
123	HOPT type vascular clamp	L 23 CM	2
124	CASTROVEIJO needle holder round handle straight and curved tip TC	L 16 CM	2
125	Micro scissors curved and straight	L 16 CM	
126	OMNITRACT RETRACTOR		2

Group- B- Dentistry

SNO	NAME OF ARTICLE	QUANTITY	
1	ALGINATE IMPRESSION MATERIAL	225 GM 3PKTS	
2	ZINC OXIDE EUGENOL IMPRESSION PASTE BASE AND ACCELARATOR	75 GM EACH 2 PKTS	
3	IMPRESSION COMPOUND	2 PKTS	
4	ADITTION SILICON PUTTY	400 GM JAR	
5	ADDITION SILICON FLOWABLE	30 GM 1 PKT	
6	GREEN STICK WAX	2 PKTS	
7	SELF CURE ACRYLIC POWDER AND LIQUID	110 GM EACH 1 PKT	
8	TRANSPARENT SELF CURE ACRYLICIN B2 SHADE POWDER LIQUID	110 GM I PKT EACH	
9	COLD MOULD SEAL	100ML 1 PKT	
10	MODEL PLASTERS 5KG	1 PKT	
11	DENTAL STONE TYPE-1V 1 KG	3 PKTS	
12	TISSUECONDITIONER 100GM	1 PKT	
13	BITE REGISTRATION WAX	1 P-KT	
14	SHELLAC BASE PLATE (UPPER/LOWER ARCH)	2 PKTS	
15	STICKY WAX	1 PKT	
16	MODELLING WAX PINK	3 PKT	
17	TEMPORARY CROWN PLASTIC	2PKTS	
18	PLASTIC TEETH ACRYLIC TYPE IN A3 AND B2 SHADES FOR ANTERIOR AND POSTERIOR TOOTHHS	2 SETS	
19	BIOSTAR SOFT PLASTIC SHEETS FOR SOFT SPLINT	2 PKTS	
20	LIGHT CURE BONDING AND ETCHING AGENT	3PKTS	
21	LIGHT CURE COMPOSITE 3GM B2,A2,A3 SHADES	2 PCS EACH	
22	GLASS IONOMER CEMENT RESTORATIVE&LUTING POWDER AND LIQUID	35 AND 15GM EACH 2 PKTS	
23	ZINC-OXIDE EUGENOL POWDER AND LIQUID	100GM AND 50ML IPKT	
24	AMALGAM ALLOY POWDER AND LIQUID(MERCURY FOR DENTAL USE)	30 GM 50GM EACH 1 PKT	
25	CALCIUM HYDROXIDE LIGHT CURE MATERIAL	5GM 1 PKT	
26	FORMOCRESOL PULP DEVITALIZER (IMPORTED)	1 PKT	
27	HYDROGEN PEROXIDE 6% BY VOLUME	5 LIT	
28	SODIUM HYPOCHLORITE 5.2%	5 LIT	
29	NORNAL SALINE	5 LIT	
30	BARBED BROCH (15-40MM) 21MM LENGTH	5 PKT	
31	REAMER 15-40&45-80 NO NITI- (21MM&25MM LENGTH) EACH	10 PKTS EACH	
32	K-FILES 15-40&45-80 NO NITI 21MM&25MM LENGTH	10 PKTS EACH	
33	PROTAPER ENDOMOTOR NITI FILE AND GUTTA PERCHA (ASSORTED SIZE)	10 PKTS EACH	
34	GUTTA PERCHA CONE 15-40&45-80 NO IN 21MM AND 25MM LENGTH	10 PKTS EACH	
35	LATERAL CONDENSER(FOR RCT) 21MM LENGTH	3 PKTS	
36	K-FILES 8 AND 10 NO 21MM AND 25 MM LENGTH	2 PKTS EACH	
37	GP SOLVENT	1 PACK	
38	EDTA 5GM	1 PACK	
39	GLIDE 5GM	1 BOTTLE	

40	AH-26 SEALER		5 PKT	
41	PRO ROOT-MTA FILLER	5GM	1 PKT	
42	FIBER POST FOR ANTERIOR AND POSTERIOR TEETH		1 PKT 50 POST EACH	
	0.8 AND 1 MM SIZE 5			
43	PRECISON DRILLS FOR POST CORE IN DIFFERENT		1 PKT	
	SIZES			
44	PESSO REAMER		1 PKT	
45	PREMADE TEMPORARY FILLING MATERIAL (ZOE)		10 PCS	
	14GM			
46	SUTURES 3-0, 4-0. VICRYL REVERSE CUTTING AND		25 PCS 0-3, 25 PCS 0-4	
	CUTTING 2465			
47	FACE MASK		200 PCS EACH	
48	COLOR MARKERS (BLAK,BLUE,RED		5 EACH	
49	DRAPE FOR PATIENT		DISPOSABLE 100 PCS	
			PLASTIC	
50	DOCTORS APRON(FULL AND HALF SLEEVE TERRY		5 PCS EACH 42/XL IN SIZE	
	COTTONWITH 80% COTTON &20% TERRY WHITE			
	HAVING IGIMS LOGO ON THE FRONT POCKET			
51	BARD PARKER BLADE SS 11, 12,15 NO		11 NO 100PCS,12 NO 15	
			PCS,15 NO 200 PCS	
52	LOCAL ANAESTHESIA 2%LIGNOCAINE WITH		25 DOZENS	
	ADRENALINE (1:80000)			
53	SUTURES 3-0, 4-0. VICRYL REVERSE CUTTING AND		20 PCS EACH	
	CUTTING 2490			
54	LOCAL ANAESTHESIA 2%LIGNOCAINE WITHOUT		2 DOZENS	
	ADRENALINE			
55	DISPOSABLE SYRINGE 2.5 AND 5ML AND 10ML		1000PCS(2.5ML)	
			5ML(50PCS),10ML(15PCS)	
56	LOCAL ANESTHETIC SPRAY		5 PCS	
57	GEL FOAM (ABGEL)		1 PKT	
58	BOTROCLOT SOLUTION		1 BOTTLE	
59	DEXONA 4MG AND 2MG		5 VIAL	
60	ADRENALINE INJ (1:1000)		5 VIAL	
61	DOPAMINE 5GM		5 VIAL	
62	AVIL(CHLORPHENIRAMINE)		5 VIAL	
63	FLUX		ONE BOTELS	
64	IODIFORM GAUZE 4	INTO 4 CM	50 PACKS	
65	ANTI FLUX		ONE BOTEL	
66	AUSTRALIN ARCH WIRE (.0016 INCH		ONE SPOOL	
67	AUSTRALIN ARCH WIRE (.014 INCH)		ONE SPOOL;	
68	NITI WIRE		ONE SPOOL	
69	E CHAIN		ONE SPOOL	
70	SEPERATOR PLACING PLIER		ONE PC	
71	O-RING		ONE SACHET HAVING 500	
			PCS	
72	SEPERATOR		ONE SACHET HAVING	
			100PCS	
73	ECHANT AND BONDING AGEN WITH PRIMER(SELF		1 SETS	
	CURE)			
74	SILVER SOLDER		ONE PC	

75	GAS TORCH DENTAL		ONE PC	
76	PREFORMED BAND	FOR ALL TEETH	1 PKT	
77	LPG STOVE AND CYLINDER		ONE PC	
78	ELETRICAL HEATER (1000 WT)		TWO PCS	
79	BLOWER		2 PCS	
80	CROWN CUTTING BIRS WITH ALL THE BURS IN		10 SETS	
	DIFFERENT SHAPES INCLUDING FINISHING BURS IN			
	DIAMOND AND CARBIDE(IMPORTED)			
81	BONE CUTTING BURS FOR STRAIGHT HAND PIECE		5 SETS	
	AND AIROTOR HAND PIECE STRAIGHT,TAPERING			
	AND ROUND			
82	MICROMOTOR HANDPIECE BURS STRAIGHT		2 EACH	
	FISSURE&ROUNDFOR BONE CUTTING			
83	ACRYLIC CUTTING BURS CARBIDE AND FINISHING		5 EACH	
	STONE BURS FOR			
	DENTURE(CYLINDRICAL,STRAIGHT,TAPERING) FOR			
	STAIGHT HAND PIECE			
84	X-RAY FILM FOR ADULT(KODAK)		150 (1 PKT) PCS IN ADULT	
			SIZE FOR IOPA	
85	X-RAY FILM HANGERS		1 DOZEN	
86	PREADJUSTABLE BRACKET WITH MOLAR BAND		10 SETS	
	TUBES ALONG WITH .022 INCH ROTH			
	PRESCRIPTION			
87	TITANIUM RECONSTRUCTION PLATES STRAIGHT 20		2 PCS	
	HOLES(2.5MM)			
88	TITANIUM BONE SCREWS 1.5MM		25 EACH	
	DIAMETER(4MM/6MM/8MM LENGTH			
89	TITANIUM BONE SCREWS 2 MM		25 EACH	
	DIAMETR(4MM/6MM/8MM LENGTH			
90	TITANIUM BONE SCREWS 2.5MM DIAMETER		25 EACH	
	(4MM/6MM/8MM LENGTH			
91	ERICH DENTAL ARCH BARS		50 PCS	
92	STAINLESS STEEL WIRE(26 AND21 GAUGE)		5 EACH	
93	THICK BAND ELASTIC PACKET FOR IMF(3 MM)		2000 PCS	
94	UNIVERSAL STAINLESS STEEL PLIER		1 PC	
95	HALF ROUND PLIER STAINLESS STEEL		1 PC	
96	WIRE CUTTER STAINLESS STEEL		1 PC	
97	PLASTIC SUCTION TIPS FOR DENTAL CHAIR		1000 PCS	
98	TIN COATED DRILL BITS FOR MICROMOTOR(1,1.5,		10 EACH	
	2MM WITH 65 MM LENGTH)			
99	STAINLESS STEEL DRILL BITS FOR		10 EACH	
	MICROMOTOR(1,1.5, 2MM WITH 65 MM LENGTH)			
100	TITANIUM BONE PLATES WITHOUT BAR(2,4,16		5 EACH	
	HOLES) 1.5,2 AND 2.5MM.			
101	TITANIUM BONE PLATES WITH BAR(2,4,16 HOLES)		5 EACH	
	1.5,2 AND 2.5MM.			
102	GLOVES SURGICAL 7 NO AND 7.5 NO LATEX		500 EACH	
	POWDER COATED(STERILE)			
103	GLOVES DIAGNOSTIC 7 AND 7.5 NO LATEX POWDER		1000 EACH	
	COATED(STERILE)			
104	DISPOSABLE GLASSES PAPER		1000 PCS	
105	BETADINE SDOLUTION 5 LITERS		1 PC	

106	DEXTROSE 5%	5 BOTTELS	
107	OXYGEN CYLINDER WITH MASK AND CYLINDER CARRYING TROLLEY DENTAL USE HAVING RENCH	1 PC	
108	FORMALIN 40%	2 BOTTELS	
109	K FILES 8 NO AND 10 NO 21MM	2 PKTS EACH	

S.NO	PARTICULARS	QUANTITY	
1.	Transfer instruments (Chittel forceps) of standard thickness	4	
2.	Instruments keeping kidney tray(small /medium/large)	1 each	
3.	Instruments keeping utility tray(small /medium/large)	2 each	
4.	Instruments keeping drums(small /medium/large)	2 each	
5.	Diagnostic instruments set (stainless steel & autoclavable plane mouth mirror tip with handle , dental probe , dental explorer , dental twizzer	100	
6.	Swab holding forceps 6"	4	
7.	Bard parker handle no. 3	4	
8.	No. 9 molts periosteal elevator	4	
9.	Howarth's periosteal elevator	4	
10.	Austin's tissue retractor forked	2	
11.	Channel retractor regular (size 8mm & 12mm)	1 each	
12.	Kilner retractor C shaped (small & medium)	1 each	
13.	Malleable copper retractor 8 inch long	1	
14.	Langenback's retractor (small 6* 20 mm) (medium 10*30mm)	1 each	
15.	Plastic cheek retractor (small & big)	1 each	
16.	Tongue depressor	4	
17.	Towel clips	10	
18.	Adson's Dissecting tissue holding forceps plain 5" & 7"	4 each	
19.	Adson's Dissecting tissue holding forceps tooth 5" & 7"	4 each	
20.	Crile artery forceps 6"	4	
21.	Mixter artery forceps 6"	4	
22.	Mosquito artery forceps 4" & 5"	4 each	
23.	Mayo needle holder fine 5"	4	
24.	Bone end cutting rongeur's 7.5"	1	
25.	Bone side cutting rongeur's 7.5"	1	
26.	Nylon faced hammer	1	
27.	Miller bone file double end straight & curved	1 each	
28.	Lucas curettes	1	
29.	Volksman bone scoop	1	
30.	Sinus forceps for drainage	1	
31.	Mouth props set of 3 (small , medium , large)	1	
32.	Ferguson mouth gag	1	
33.	Dean's suture cutting scissors	4	
34.	Kilner's angular scissors	1	
35.	Iris dissection scissors	1	
36.	Frazier no 3 suction cannula	4	
37.	Gillies skin hook	4	

38.	Dental elevator straight	4	
39.	Dental elevator cryer mesial & distal	4 each	
40.	Dental elevator coup land's straight	4	
41.	Dental elevator coup land's curved	4	

42.	Dental elevator coup land's serrated	4	
43.	Dental elevator cross bar	4	
44.	Dental elevator apexo mesial & distal	4 each	
45.	Dental elevator root pick	4	
46.	Dental elevator warwickjames mesial & distal	4 each	
47.	Maxillary anterior extraction forceps	4	
48.	Maxillary premolars extraction forceps	4	
49.	Maxillary molar extraction forceps(left & right)	4 each	
50.	Maxillary molar extraction forceps (Bayonet)	4	
51.	Maxillary root extraction forceps	4	
52.	Mandibular anterior extraction forceps	4	
53.	Mandibular premolars extraction forceps	4	
54.	Mandibular universal molar extraction forceps	4	
55.	Mandibular molar extraction forceps Cowhorn	4	
56.	Pediatic extraction forceps (2maxillary	1 each	
57.	molar,1mandibular molar,1anterior,1root)		
58.	Marking ink pen (stainless steel &autoclavable)	2	
59.	Wire twisting forceps	1	
60.	Wire cutter double action strong with tungsten carbide tip	1	
61.	Arch bar cutter		
a	Mini plate cutter	1 2	
62.	Self holding screw driver with fiber handle (1.5 , 2, 2.5 mm)	2 each	
63.	Ordinary screw driver (1.5 , 2, 2.5 mm)	1 each	
64.	Plate bending forceps	1	
65.	Plate holding forceps	1	
66.	Bone holding forceps pointed 6"	1	
67.	Rowe maxillary disimpaction forceps (right & left	1 each	
68.	Asch nasal septum forceps (small & big)	1 each	
69.	Rowe zygomatic elevator	2 each	
70.	Orthodontic soldering torch with gas	1	
71.	Dappen dish	5	
72.	Amalgam plugger (Teflon coated)	2	
73.	Amalgam carrier stainless steel(Teflon coated)	2	
74.	Mortar & pestle	2 each	
75.	Spoon excavator(Teflon coated)	2	
76.	Ball burnisher (Teflon coated)	2	
77.	Diamond shaped carver(Teflon coated)	2	
88.	Cement spatula(Teflon coated)	2	
79.	Cement plugger(Teflon coated)	2	

80	Cement condensor(Teflon coated)	2	
81	Teflon coated Agate spatula	2	
82	Glass slab for cement mixing (dental use)	2	
83			
84	Impression trays edentulous (0 to 4 no.)non perforated (stainless steel and plastic)	2 sets each	
85	Impression trays dentulous (0 to 4 no.) perforated (stainless steel and plastic)	2 sets each	
86	Wax knife	5	
77	Le cron's carver	5	
88	Mean value articulator	1	
89	Rubber bowl (small & medium)	2 each	
90	Plaster spatula (metal & plastic)	2each	
91	Plaster knife	2	
92	Crown remover (gun type & manual)	1 each	
93	Double door refrigerator(350L with stabilizer) 5 star	1	
94	Digital camera up to 15 pixels(imported and recent	1	
95	advances preferred excluding Chinese make) Laptop with LCD projector& projection screen	1	
96	Projection board (white) with colour markers& eraser	1	
97	Notice board	1	
98	Water bath sterilizer standard large size	2	
99	Ultra violet sterilizing cabinet (24 tray capacity) (imported and recent advances preferred excluding Chinese make)	1	
100	Dog bite articulator	3	
	Sphygmomanometer with stethoscope (imported and recent advances preferred excluding Chinese make)	2	
101	Bio star machine	1	
	Digital Weighing machine	1	
102	Wheel chair (standard)	1	
103	Radio bisuography machine	2	
104	Micro motor machine	2	
105	Movable IOPA X-RAY Unit	2	
106	Pulp vitality tester	2	
107	Apex locator	2	
108	Endo motor	1	
109	Automatic Dental IOPA film developer (for 10 films)	1	
110	Automatic Dental IOPA film developer (for 50 films)	1	
112	Orthodontic spot welder	1	
113	Table top front loading Autoclave	1	

Group-C

ICU Ceiling Hanging Curtain

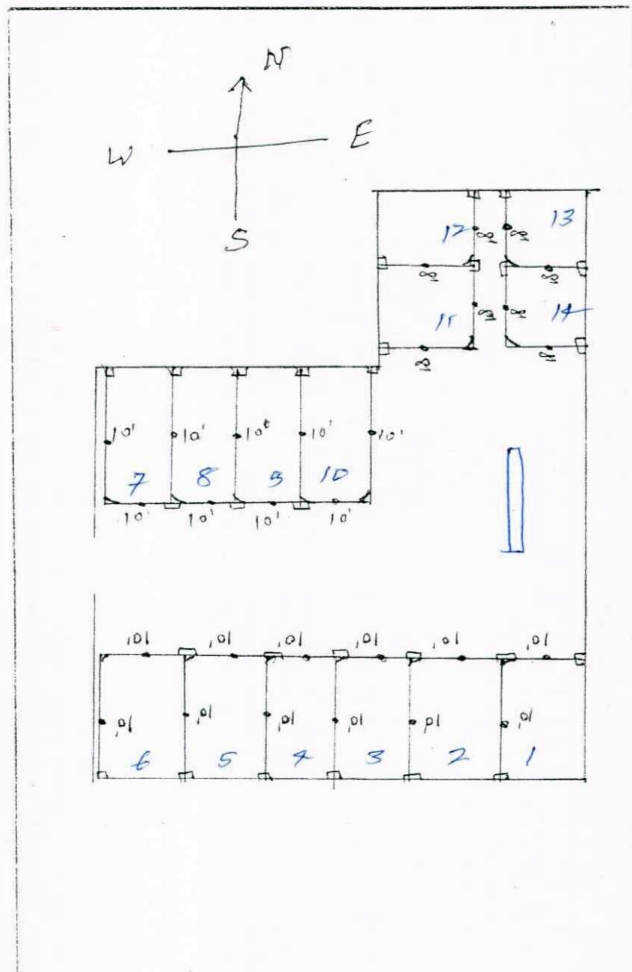
TECHNICAL SPECIFICATION FOR ICU CURTAIN

Sl. No.	PARAMETER	MATERIAL DEITAILS
1	Track Material	Providing and Fixing of Hospital Cubicle Track System comprising of Aluminum alloy (6063 – T6), All Corner to have radius of 0.5, Tensile Strength 195 MPa, Shear Strength 150 MPa. Shape & Size tolerance as ISO standard 733 – 1983, all material to have ROHS compliance, with Corrosion resistance properties with 50-60 micro Standard traffic white powder coating (Mahacoat) with seven stage processes, Tracks to have drill guide on the top.
2	Track Size	
	a Gauge	1.5-1.6mm, 3.3mm from top
	b Height	27mm
	c Width	20.4mm
3	Runner Type	Wheel Type Roller Runner
4	Runner Material	Plastic HD, Deralin with SS 302 Hook
5	Hooks	SS 302
6	Bends	Tracks are bendable to radius of 280 mm at 90 degree to cover the whole bed
7	Track Height	As per customers required/site requirement (Standard Elevation 2400mm)
8	Support Units	
	a Roof Suspenders	Made of aluminum pie of 12.7 -12.9mm diameter. The Upper Circular Plate made of aluminum with 50.4 mm diameter. These are with white powder coating (outer surface) finish &are of variable height fixed with the Ellen bolt, track fixed with screw only and fixing with the ceiling is with anchors, bolts, screws etc.
	b Wall Supports	Aluminum white powder coated
	c Bridge Clamp	Aluminum white powder coated
9	Additional information:- A Curtain Removal Point	Made of Mild Steel with Zinc White for simple loading & unloading f curtains. (Also serves as an end hook retainer).

SPECIFICATION FOR CURTAIN

Sl. No.	PARAMETER	MATERIAL DEITAILS
1	Curtain Material	Polyester Blended
2	Standard Curtain Size	
	a) Height	84"
	b) Width	46"
3	Mesh (Net) Size	18" from top of the curtain made of nylon
4	Curtains Type: Stain Retardant Curtains	These Curtains thought not inherent, offers stain retardant qualities essential to ward of normal stains that they are imposed to. They come with qualities of water & stain repellency that will give lasting values to its users. It comes with rust proof SS grommets 6" on centers. Available in different designs and more than different colours.

③



Group-D; Supply of Ligature & Sutures on Annual rate Contract

(Supply of Ligatures & Sutures on Annual rate contract basis)

<u>NAME</u>	<u>SIZE</u>
1. Vicryl	All Sizes /Nos.
2. Monocyl	All Sizes /Nos.
3. Prolene	All Sizes /Nos.
4. Nylon	All Sizes /Nos.
5. Atro Silk	All Sizes /Nos.
6. Nylon Loop	All Sizes /Nos.
7. Sutupack	All Sizes /Nos.
8. Sling	
9. Liga Clip LT-200, LT- 300	
10. PDS	All Sizes /Nos.
11. T/C	All Sizes /Nos.
12. Catgut	All Sizes /Nos.
13. Mersilk	All Sizes /Nos.
14. Ethilon	All Sizes /Nos.

NOTE:- The firm may also submit their price bid having detail for R/C & Cat Part No. of their official Price List.

Group-E- (Chair for Conference Hall)

Specification of Chair

Revolving High Back Hydraulic chair, structure made of steel and fibre, and sitting area of leather and acrylic foam. Having mechanism to change the height as per requirement. Covers one year manufacturing warranty includes hydraulic, loose fitting etc. comfort level to be adjustable in back side accordingly.

Dimension:- 76.1cm wide X 76.1cm depth X 100.6-110.6cm height.

Specification of Executive Chair

Revolving High Back Hydraulic chair, structure made of steel and fibre, and sitting area of leather and acrylic foam. Having mechanism to change the height as per requirement. Covers one year manufacturing warranty includes hydraulic, loose fitting etc. comfort level to be adjustable in back side accordingly.

Dimension:- 74.1cm wide X 74.1cm depth X 100.6-110.6cm height.

Specification of Visitor Chair

Low back chair made of steel & fibre and sitting area made leather and acrylic foam.

Covers one year manufacturing warranty. Comfort sitting level.

Dimension:- 66.1cm wide X 66.1cm depth X 90.6-90.6cm height.

Note:- The sample of all these chairs are in store section. The bidders are requested to Visit before submit the bid.

Group-F:Surgical Magnifying Loupe

Surgical Magnifying Loupe
